

Community Action Plan 2021 Summary

How we developed the plan during 2020:
See full plan for more detail



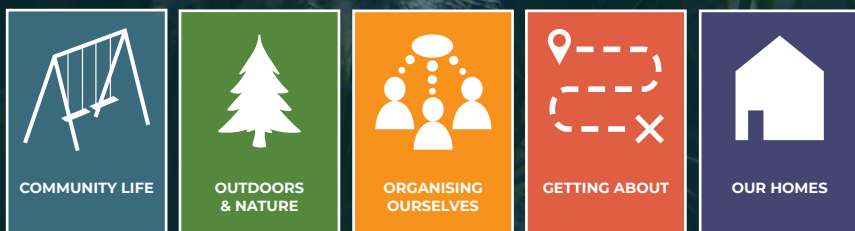
This community action plan was prepared during 2021. It shows how we as a community will fulfil our aspirations and tackle the big challenges that we and the country face.

This plan shows how we will lead the way to solve the challenges that we and the rest of rural Scotland face: good jobs, affordable homes, rural poverty, climate change, an ageing population, cuts to public services and – perhaps hardest to define, but very real for this community – encroaching urbanism.

We want to make it easy to get around without a car, build homes for people who need them most, create local childcare so parents can get back to work, improve access to our hills and lochs, and much more besides.

Improvements won't happen overnight, but we are fortunate to have the resources, commitment and energy to make things happen.

Turn over to find out more.



OUR COMMUNITY OUR FUTURE

ERROGIE - FOYERS - GORTHLECK - INVERFARIGAIG - TORNESS - WHITEBRIDGE

 <p>Community Life</p>	<p>RETAIN POST OFFICE & SHOP</p> <p>Retain shop and PO in the community</p>	<p>AFTER-SCHOOL / NURSERY CARE</p> <p>Local nursery and wrap-around out-of-school care</p>	<p>LOCAL COMMUNITY HUBS</p> <p>Community hubs in each main settlements, home to a wide range of complementary activities</p>	<p>FOYERS SPORTS & LEISURE FACILITIES</p> <p>Local sports facilities for residents and visitors (Riverside Field and slipway)</p>	<p>THE FUTURE OF OUR SCHOOLS</p> <p>Start community discussion with local authority to retain and enhance local education</p>
 <p>Outdoors & Nature</p>	<p>PLAYPARKS</p> <p>Modern play areas in each village</p>	<p>PATHS AND PLACES</p> <p>Network of signposted walking routes with good surfaces and facilities</p>	<p>COMMUNITY WOODLAND</p> <p>For nature conservation, learning and community activity</p>	<p>COMMUNITY RANGERS</p> <p>Dedicated year-round ranger squad for maintenance and education</p>	
 <p>Organising Ourselves</p>	<p>HELP PEOPLE INTO WORK</p> <p>More local jobs, apprenticeships and work experience</p>	<p>SUPPORT VOLUNTEERING AND GROUPS</p> <p>Enable volunteers to enhance their skills and satisfaction, retain and enhance volunteer capacity</p>	<p>IMPROVE COMMUNICATIONS</p> <p>Co-ordinated printed and online community information accessible to all</p>	<p>PLANNING AND PUBLIC SERVICES</p> <p>Work with public sector to ensure their plans and services reflect community aspirations</p>	
 <p>Getting Around</p>	<p>COMMUNITY TRANSPORT</p> <p>Attractive low-carbon affordable alternative to the car, especially for those without car access</p>	<p>SAFER ROAD NETWORK</p> <p>Improve road safety, especially for pedestrians and cyclists</p>	<p>SAFE WALKING AND CYCLING TO SCHOOL AND COMMUNITY HUBS</p> <p>Make it safe for people to walk and cycle to schools and community hubs</p>		
 <p>Our Homes</p>	<p>AFFORDABLE COMMUNITY -OWNED HOMES</p> <p>Affordable rented community-owned homes</p>	<p>SPECIALIST ACCOMODATION: ELDERLY CARE RESPITE</p> <p>Locally available care and respite services and accommodation</p>	<p>ZERO-CARBON HOMES FOR ALL</p> <p>Advice and grants to ensure homes are warm, well maintained, low-carbon and not lying empty</p>	<p>AFFORDABLE BROADBAND FOR ALL</p> <p>Access to affordable high speed broadband for every household</p>	

THE NEXT STEPS...

In the full plan, every one of the action areas from the table above is described and assessed in more detail. We've tried to make it clear to anyone reading, be it the people of our community or potential funders, exactly what we want from each area, and how it will contribute to our overall goal of making ours one of the best, most forward thinking communities in Scotland.

To show how the action areas will contribute to our individual aspirations, we've used some personas - characters who represent a wide demographic of local residents, to see how each area will benefit them.

Each action is also assessed based on how well it fits with our three overarching objectives (see front cover): Nurture our environment, Develop our community, and Sustain our economy - as well as its contribution to national priorities such as Zero Carbon and Health & Wellbeing. Showing how we're meeting these national priorities will go a long way to helping us secure outside funding!

As well as all this you'll also see some familiar things like quotes from the community consultation and ideas from the Ideas Bank. Check it out in the full plan - you might just see a quote from yourself!

"a community should be more than a collection of houses"

Contribution to individual aspirations:



Jim 68

There aren't as many jobs on the land as there used to be, and we need to have work locally for people to be able to stay here and live a decent life.



Claire 34

More choice of jobs is definitely what the community needs - not just for me personally, but for my friends and my kids.



Ryan 16

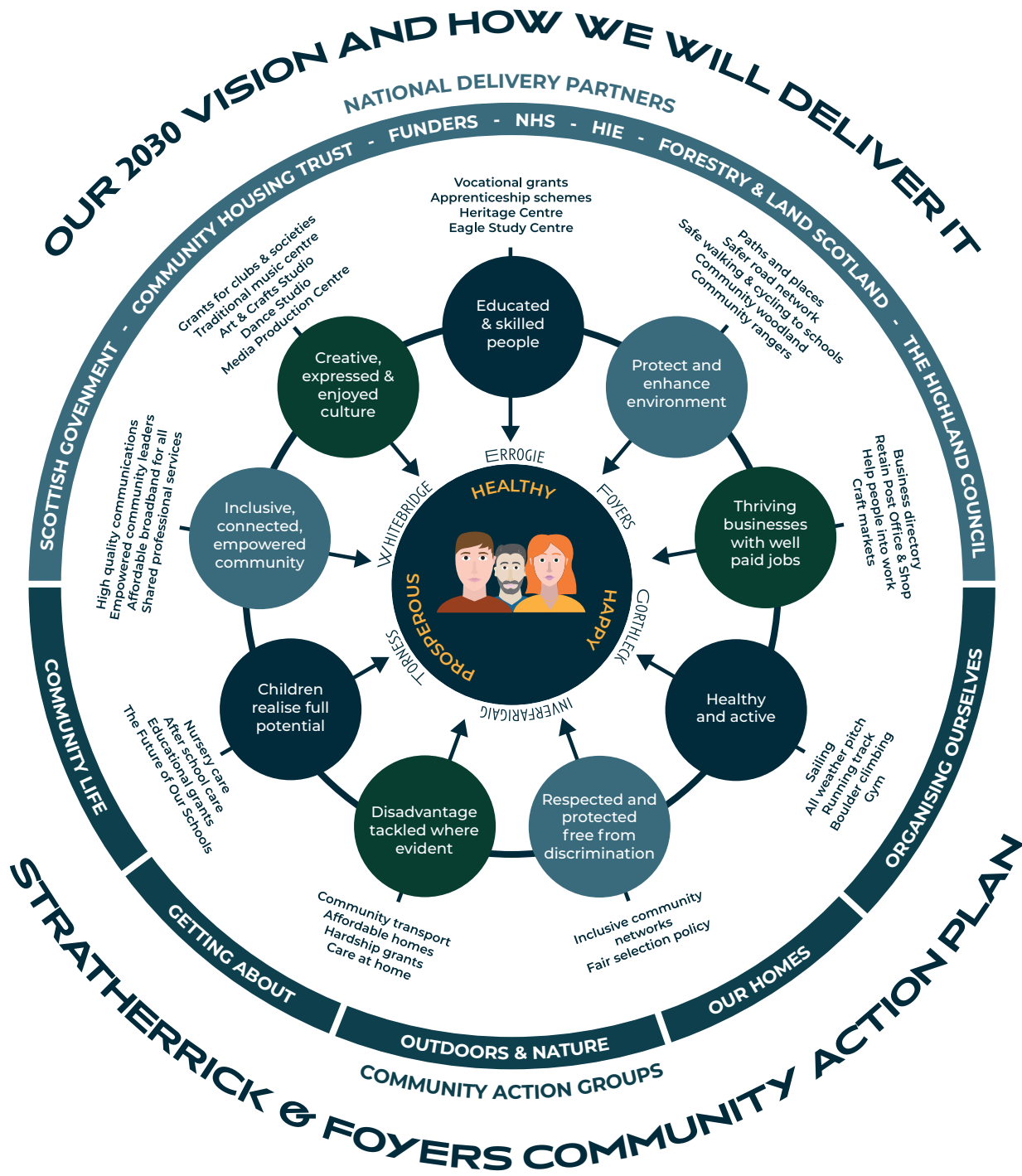
I don't really know where I'd get a job here. A bit of local work experience might help.

Contribution to vision and objectives:

Nurture our environment	Excellent fit
Develop our community	Very good fit
Sustain our economy	Good fit

Contribution to national priorities:

Fair, Equal, Diverse	Excellent fit
Health & Wellbeing	Excellent fit
Community	Very good fit
Zero Carbon	Excellent fit
Inclusive Growth	Excellent fit
Education & Culture	Good fit



SEE THE FULL PLAN!



Check out the full Community Action Plan online at www.communityfuture.net or www.stratherrickcommunity.org.uk or see a hard copy in the **Wildside Centre**.

Contact Stratherrick and Foyers Community Trust if you'd like to find out more or get involved:

@ admin@sfctrust.org.uk

07464 394276